

# Business model

## BUSINESS LINES

## SERVICES

FREIGHT  
TRANSPORTATION

**85,600** km  
of tracks

**7,108**  
locomotives

RZD

FFC



**145.2** thousand  
freight railcars

**1,243.6**  
mt  
of freight handled

**3,221.0**  
bn tkm  
of freight turnover<sup>1</sup>

PASSENGER  
TRANSPORTATION

**18** thousand  
passenger  
railcars

**1,312**  
locomotives

**398** pairs  
of express and  
high-speed trains

RZD

**Federal Passenger  
Company**  
(long-haul routes)



**Suburban passenger  
companies**

**872**  
m  
transported  
passengers

**78.1**  
bn tkm  
of passenger  
turnover

LOGISTICS  
SERVICES



**GEFCO**  
(Europe's Top 5 logistics operator)

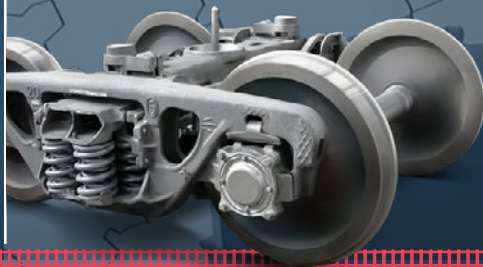
**RZD Logistics**  
(the largest multimodal logistics  
operator in the CIS and the Baltics)

**UTLC ERA**

**4.2** m  
cars transported

**242.4**  
thousand  
TEU transported  
containers

OTHER  
BUSINESSES



**RRC-1**  
(railcar repair company)

**RRC-2<sup>2</sup>**  
(railcar repair company)

**Company TransTeleCom**  
(telecommunications)

**RZDstroy**  
(infrastructure construction)

**5,480.8**  
km  
of tracks repaired

**417** km  
of tracks constructed

**291.4**  
km  
of tracks electrified

<sup>1</sup> Including freight luggage transportation and empty runs of third-party railcars.

<sup>2</sup> Sold in Q2 2020.

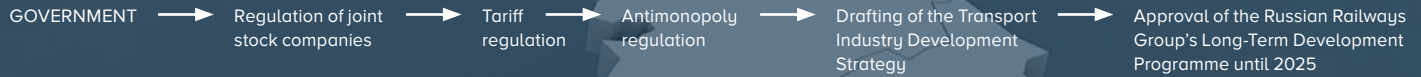
<sup>3</sup> Including the funds provided by the Russian National Wealth Fund (preferred shares) and contributions in the form of real estate owned by the Federal Government.

<sup>4</sup> Headcount of the Russian Railways Group.

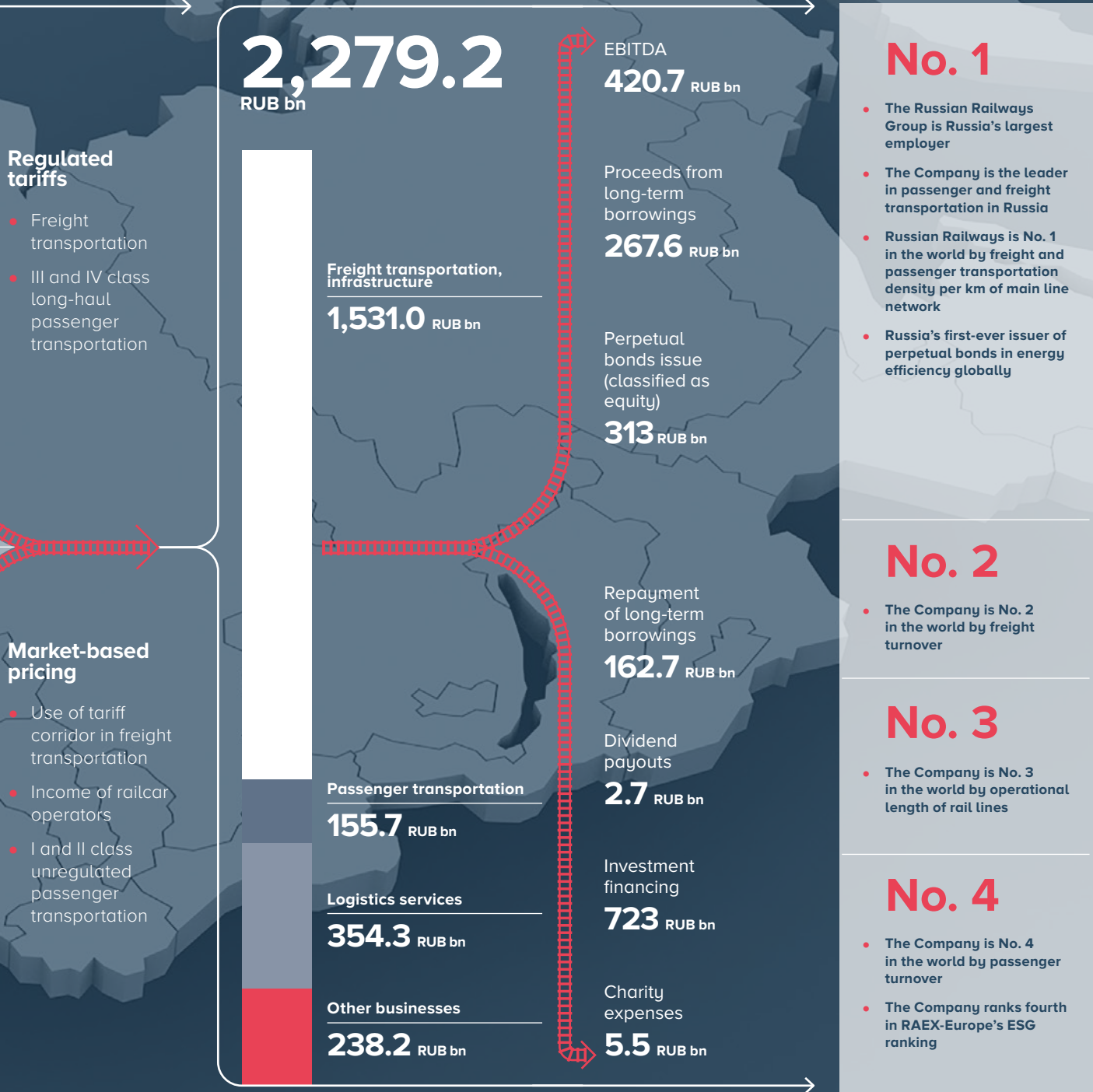
<sup>5</sup> The financing items of Russian Railways Group are stated on an amalgamated basis. For more details see the IFRS statements for 2020 at <https://eng.rzd.ru/en/9637/page/103290?id=11909#main-header>.

PERSONAL<sup>4</sup>

**831.6**  
thousand people



**PRICES** → **REVENUE GENERATION** → **FINANCIAL FLOWS<sup>5</sup>** → **VALUE CREATION**



The revenue data are reported as per the IFRS statements for 2020.

GOVERNMENT  
Charter capital contributions<sup>3</sup>  
**93.5** RUB bn

Subsidies  
**60.1** RUB bn

The Group's contribution to Russia's GDP through taxes, fees and dividends  
**323.5** RUB bn  
(0.3 % of GDP)